

R.G.S. ATALANTA FIBRE GLASS BODIES

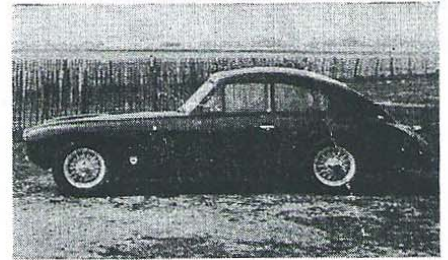
FIRST IN THE FIELD WITH OPEN AND SALOON MODELS
UNSURPASSED IN DESIGN AND QUALITY



Body supplied to T. A. Stodart for Bristol 400 chassis. Wheelbase 9 ft. 6 in. R. T. Dart Ltd., Chapel Street, Tiverton, mounted the body and will be glad to supply and fit our shells to customers' chassis in Devon areas.



Body supplied to T. Wilkinson for T.V.R. chassis. Wheelbase 7 ft. 6 in. T.V.R. Engineering have had three of the R.G.S. bodies and will be glad to supply and fit our bodies for either T.V.R. chassis or any other make. Inquiries to T.V.R. Eng., 18, Beverley Grove, Blackpool S.



Body supplied to R. W. Jacobs for YB model M.G. chassis. Wheelbase 8 ft. 3 in. Dick Jacobs will be pleased to supply our body shells to all customers in his part of the world. Inquiries to R. W. Jacobs & Son, Mill Garage, Chigwell Road, South Woodford, E.18.

These body shells from our new moulds, as will be seen above, provide the finest possible available foundation for a really first-class sports car, open or closed, within reach of the average enthusiast's pocket. They are moulded by Necolam Ltd., Beach Road, Blyth, Northumberland, who have the longest experience in this class of moulding of any company in the British Isles. Buy your bodies from the leaders in the field. Well over 50 bodies have now been sold.

AGENTS, SCOTLAND :
Pegasus Motors,
205-217, William Street,
Glasgow, C.3.

AGENTS, CANADA :
Campbell Sports Car Co.,
122, Willowdale Street,
Willowdale, Toronto.

AGENTS, SWITZERLAND :
M. Humair et Fils,
41, rue Liotard,
Geneve.

FULL DETAILS AND INQUIRIES TO : R.G.S. AUTOMOBILE COMPONENTS LTD.
BROOKSIDE GARAGE, WINKFIELD, WINDSOR, BERKS Telephone : WINKFIELD ROW 91

Chiltern Cars

offer :

- ALLARD**—1951 Ardun J.2, wire wheels, many extras, exceptional condition ... **£595**
- B.M.W.**—1939 Type 328 2-seater, first-class condition ... **£475**
- BUGATTI**—Type 51, minus engine : **Offers invited**
- FIAT**—1938 1,100 pillarless saloon ... **£185**
- H.R.G.**—1½-litre 2-seater, ex-G. A. Rud-dock. Laystall rebuild, head "flowed" by J. Lucas ... **£365**
- M.G.**—1939 2-litre sports saloon ... **£225**
- RAILTON**—8-cylinder Randalah tourer ... **£165**
- RILEY**—1½-litre Lynx tourer, exceptional condition ... **£265**
- TALBOT**—1936 3½-litre sports saloon ... **£165**
- WOLSELEY**—Hornet 2/4-seater, fitted with Morris Minor engine ... **£65**

TERMS AND EXCHANGES

11a, WATER LANE, LEIGHTON BUZZARD,
BEDFORDSHIRE
Telephone - - Leighton Buzzard 2060

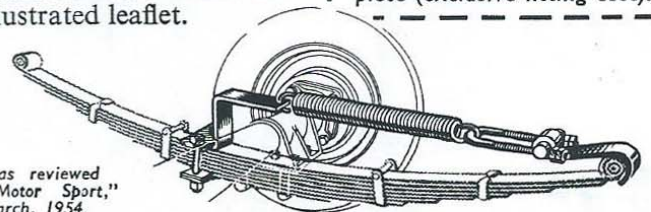
CORNER SAFELY with

THE RIDEMASTER SPRING CONTROL

Safety when cornering with the "Ride-master" variable-rate suspension. Stiffens the springing when your road springs deflect. Road shocks reduced, comfort increased, car-sickness minimised, riding with light load unaffected. Simple to fit, needs no maintenance. Write for illustrated leaflet.

Available for : Austin A40, A70, A90 light commercial. Vauxhall 'J', 'L' and 'E'. Ford Zephyr, Consul and Zodiac, Standard Vanguard.

£3-15-0 the set, complete (exclusive fitting cost).



—as reviewed
"Motor Sport,"
March, 1954.

TOLEDO WOODHEAD (SHEFFIELD) LIMITED
CLIFTON WORKS, SHEFFIELD 3