

Sunroof guides – a modern replacement

By Rocky Von Dullen

The sliding roof panel on Y's and YB's runs on a set of rails fixed to the roof structure. A set of guides on the panel engages with the rails. The front guides fit into adjustable metal brackets. The rears are riveted to four metal tabs extending from the panel. The original guides were made from 1/8" thick wool felt. Over time and with use, many of these guides are now deteriorated. Had it been available, I suspect the factory would have fabricated the guides from polytetrafluoroethylene (PTFE).

PTFE offers several advantages over felt: it does not absorb water; it is a rigid solid and provides a more precise fit to the rails; and most importantly, it is self-lubricating. Oils or grease that could stain the headliner fabric are not required.

A set of front and rear guides can easily be fabricated from a 3/8" thick X 1" wide block of solid PTFE. A minimum 7" length is required for one set of guides. A table saw, 1/8" drill bit and razor knife are all the tools required. The attached drawing provides dimensions, details and number of parts required.

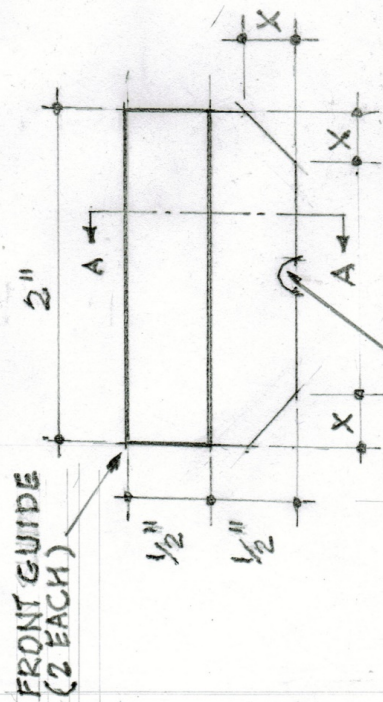
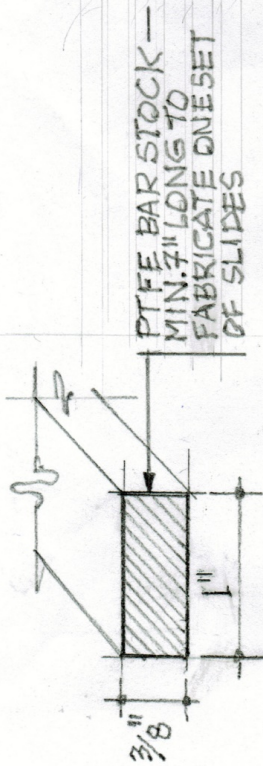
The front guide brackets were originally secured to the sliding roof panel with a slotted pan head screw. I have replaced them with 2BA-1/2" hex head setscrews. These are easily adjusted using a nut driver or socket.



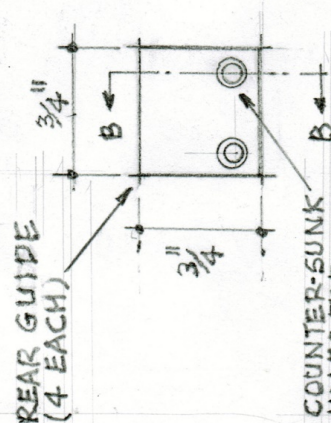
MG YA/YB SUN ROOF

PTFE GUIDES

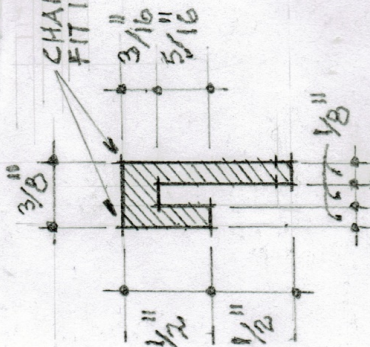
NOTE: DRAWING NOT TO SCALE; ALL PARTS SHOWN TO BE FIT TO INDIVIDUAL CAR; "X" DIMENSION OF FRONT SLIDE TO ALIGN WITH OF METAL BRACKET



RELIEF TO FIT FIXING SCREW SLOT



COUNTER-SUNK HOLES FOR 1/8" SPLIT RIVETS - DRILL TO FIT EXISTING HOLES IN METAL TABS



CHAMFER CORNERS TO FIT INTO METAL BRACKETS

