

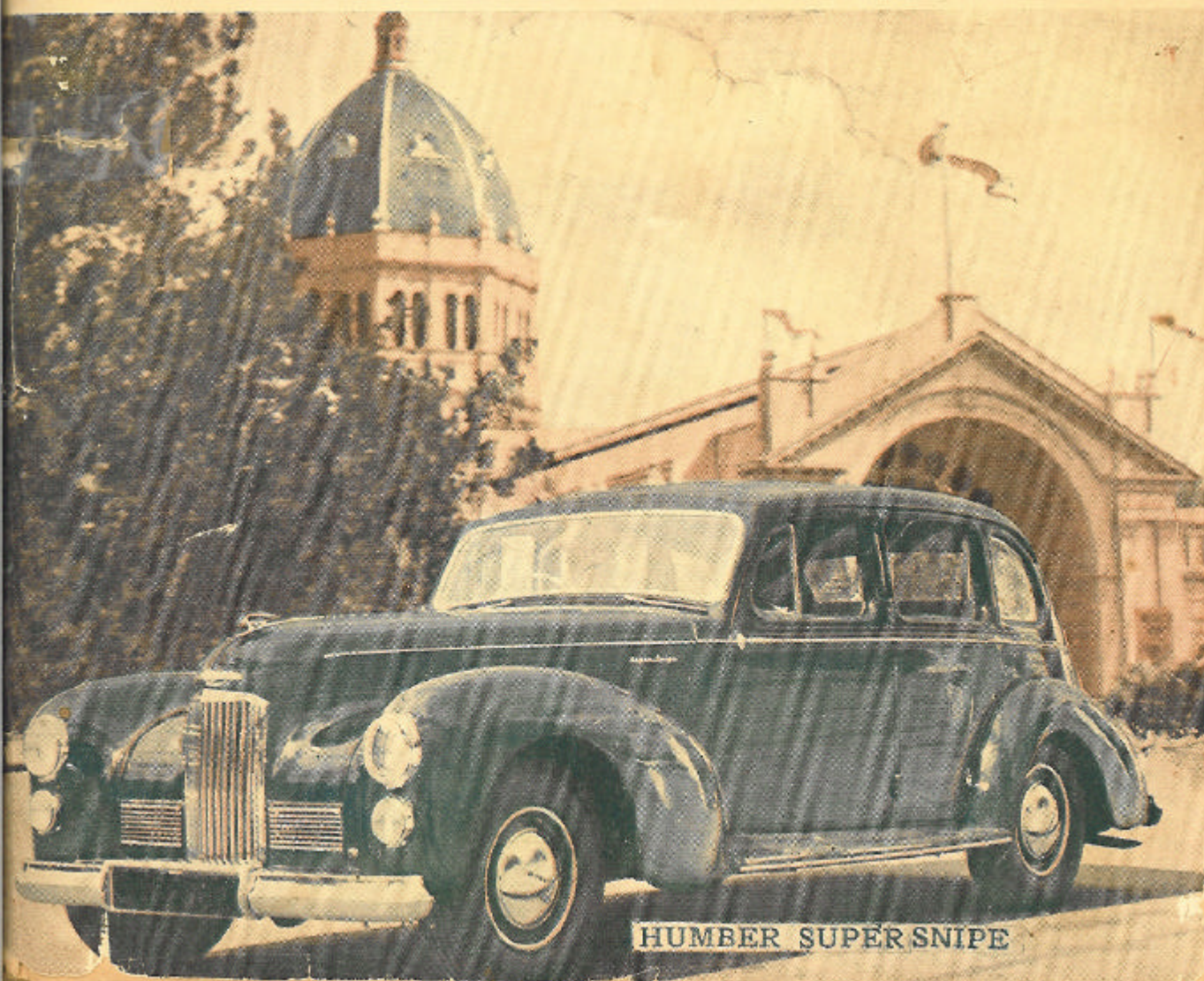
SPECIAL MOTOR SHOW REPORT - - ENLARGED ISSUE 1/6

Motor Manual

THE AUSTRALIAN MONTHLY

JUNE, 1949: VOL. 4, No. 39

Registered at G.P.O. Melbourne for transmission through the post as a periodical.



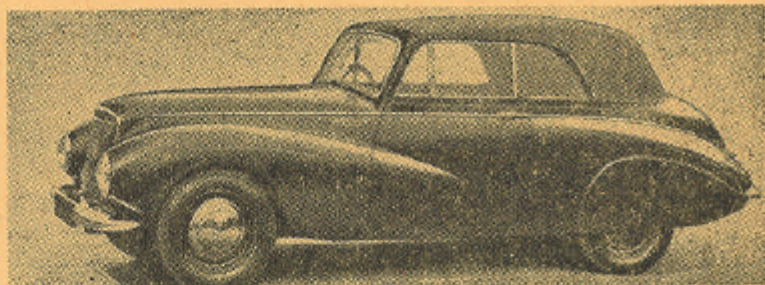
HUMBER SUPER SNIPE



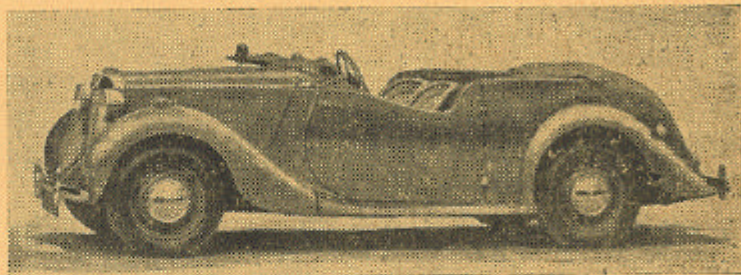
Australia's first post-war Motor Show in the Exhibition Building, Melbourne, attracted over 231,414 people last month. During its 10 days, approximately £100,000 was taken in new British car orders. No orders could be taken for American models.

TWO EXAMPLES OF SEMI-SPORTS CARS

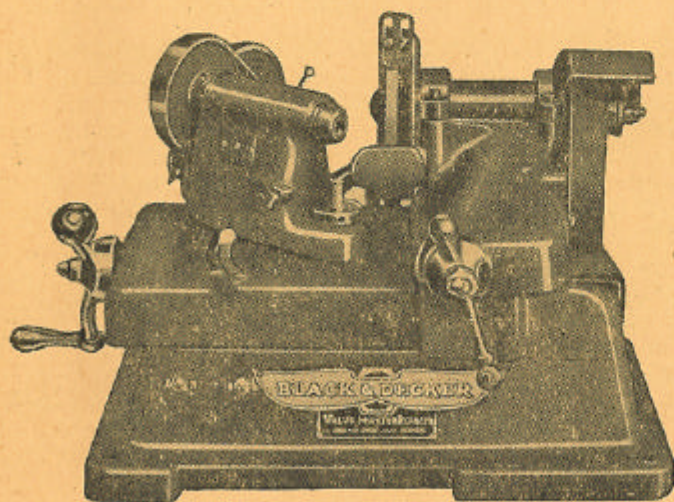
The Sunbeam-Talbot is available with either a 10 h.p. or 2 litre engine and has many of the handling characteristics of a sports car, however, it offers a big comfortable body that consequently cuts down its performance which although very good is not really in the sports car class.



The new M.G. tourer has the same power unit as the well-known T.C. but the same chassis design and accommodation of the Y-type saloon. Designed primarily for fast touring the new M.G. offers comfortable riding and good performance, the latter, of course, not being up to the standard of the T.C. which is essentially a sports job.



UNSURPASSED FOR QUALITY, ACCURACY and DEPENDABILITY GRIND YOUR VALVES BETTER and FASTER with a BLACK AND DECKER VALVE MASTER REFAKER



Combines speed of operation, smooth finish, and absolute accuracy in valve face grinding of all valves for internal combustion engines.

Distributed by
Sydney and Newcastle:
Bennett & Wood Pty. Ltd.,
Warburton Frankl Ltd.
Melbourne:
E. A. Machin & Co.
McPhersons Ltd.
Warburton Frankl (Melb.) Ltd.
Adelaide:
McPhersons Ltd.
Parsons & Robertson Ltd.
Brisbane:
Martin Wilson Bros. Pty. Ltd.
Perth:
William Adams & Co. Ltd.
Tasmania:
W. & G. Genders Pty. Ltd.

FOGLAMPS AND PASSLIGHTS

These must be set so that the beam does not rise above the horizontal when the car is standing on level ground. To ensure this, dip the lamp very slightly to compensate for road inequalities or an extra heavy load in the rear of the car, and also tilt the lamp to the right to allow for road camber. In addition the lamp can be swung slightly to the left in order to give additional illumination on the nearside of the road. If adjustment is necessary, slacken the single fixing nut and move the lamp on its adjustable mounting to the required position. Finally, tighten the locking nut.

FOCUSSING

In order that the lamps shall give the best results, the bulb filament must be as near as possible to the focus of the reflector. If the bulb is out of focus, the lamps will have a poor range, and will cause dazzle to approaching traffic.

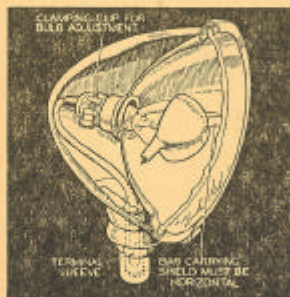
When focussing Lucas foglamps, adjust the position of the bulb until any top light is removed, and until the semi-circular beam of light is of the greatest concentration, i.e., the area of the beam must be as small as possible.

When focussing headlamps, it will be found an advantage to cover one lamp while testing the other. If the lamp does not give a uniform long range beam, without any dark centre, the bulb needs adjusting. To do this, remove the lamp front and reflector as described later, slacken the clamping clip at the back of the reflector, and slide the bulb holder backwards or forwards. After each adjustment, note the effect with reflector and front refitted.

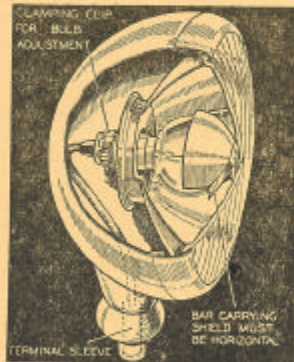
When the best position for the bulb holder has been found, the clamping screw must be tightened.

TYPES FT27.

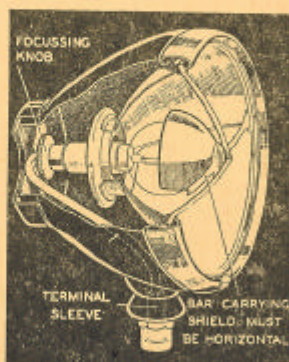
Withdraw the screw from the fixing band which can be sprung off the lamp. The lamp glass and rubber can now be removed and the reflector withdrawn. When replacing, be certain that the shield and rubber bands are carefully refitted.



Type FT27



Type FT57



Type FT37

With some types of lamps, alternative positions are provided for the bulb in its holder. Try each position for the best results.

The beam projected by Lucas FT.37 passlights can be varied in regard to the amount of spread or penetration best suited for driving in different densities of fog by a focussing knob which is instantly accessible when the cap is removed from the back of the lamp, by turning it to the right. The focussing knob is provided with a "click" action and will not slip after once being set.

TYPES FT37

Press back the spring clip at the bottom of the lamp and then lift off the front and reflector. When replacing, locate the top of the rim first and then press the front on to the lamp body and secure by means of the clip.

The bulb holder can be removed from the back of the reflector by turning to the left and withdrawing.

With some types the lamp front can be removed when the spring clip is pressed back. The reflector is withdrawn by detaching it from its three supports when they are pressed slightly upwards.

When replacing the lamp front, locate top of rim first, and then press front on to the body, and secure by means of the clip.

To replace the bulb, detach the bulb shield which is located in two slots in the rim of the reflector. The shield must be pulled out without undue force, by grasping the arms as near to the ends as possible, and when replacing care must be taken to ensure that the open part is at the bottom. The small metal shield located on one peg of the bulb must be replaced so that it is at the top of the bulb.